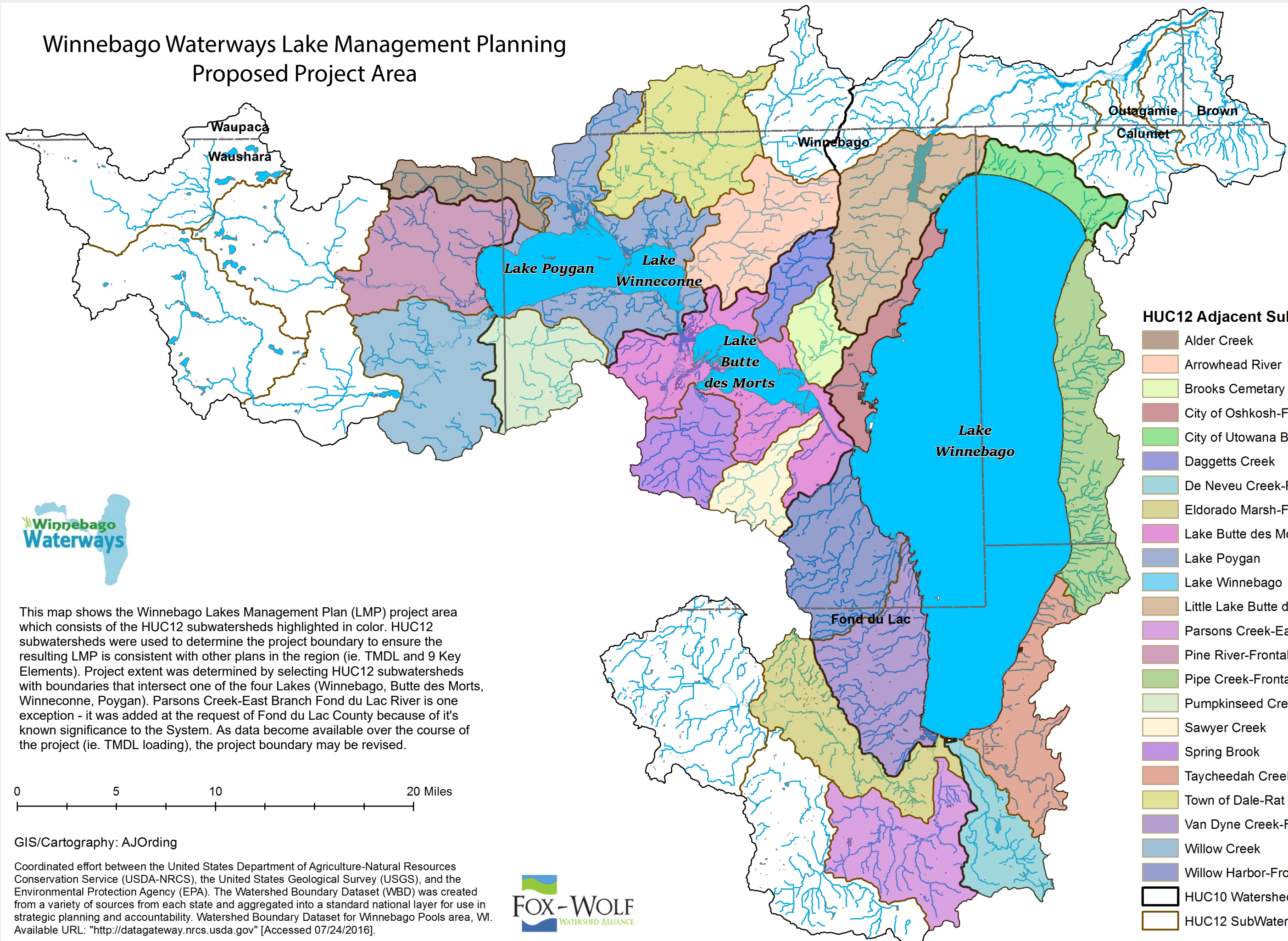
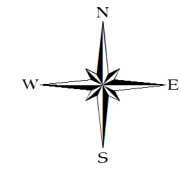


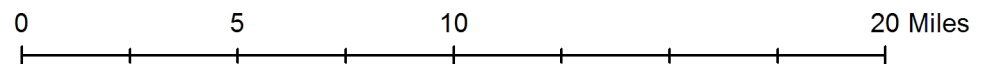
# Winnebago Waterways Lake Management Planning Proposed Project Area



- HUC12 Adjacent SubWatershed**
- Alder Creek
  - Arrowhead River
  - Brooks Cemetary
  - City of Oshkosh-Frontal Lake Winnebago
  - City of Utowana Beach-Frontal Lake Winnebago
  - Daggetts Creek
  - De Neveu Creek-Frontal Lake Winnebago
  - Eldorado Marsh-Fond Du Lac River
  - Lake Butte des Mortes-Fox River
  - Lake Poygan
  - Lake Winnebago
  - Little Lake Butte des Mortes
  - Parsons Creek-East Branch Fond Du Lac River
  - Pine River-Frontal Lake Poygan
  - Pipe Creek-Frontal Lake Winnebago
  - Pumpkinseed Creek
  - Sawyer Creek
  - Spring Brook
  - Taychedah Creek-Frontal Lake Winnebago
  - Town of Dale-Rat River
  - Van Dyne Creek-Frontal Lake Winnebago
  - Willow Creek
  - Willow Harbor-Frontal Lake Winnebago
  - HUC10 Watershed
  - HUC12 SubWatershed



This map shows the Winnebago Lakes Management Plan (LMP) project area which consists of the HUC12 subwatersheds highlighted in color. HUC12 subwatersheds were used to determine the project boundary to ensure the resulting LMP is consistent with other plans in the region (ie. TMDL and 9 Key Elements). Project extent was determined by selecting HUC12 subwatersheds with boundaries that intersect one of the four Lakes (Winnebago, Butte des Morts, Winneconne, Poygan). Parsons Creek-East Branch Fond du Lac River is one exception - it was added at the request of Fond du Lac County because of it's known significance to the System. As data become available over the course of the project (ie. TMDL loading), the project boundary may be revised.



GIS/Cartography: AJOrding

Coordinated effort between the United States Department of Agriculture-Natural Resources Conservation Service (USDA-NRCS), the United States Geological Survey (USGS), and the Environmental Protection Agency (EPA). The Watershed Boundary Dataset (WBD) was created from a variety of sources from each state and aggregated into a standard national layer for use in strategic planning and accountability. Watershed Boundary Dataset for Winnebago Pools area, WI. Available URL: "<http://datagateway.nrcs.usda.gov>" [Accessed 07/24/2016].

