



- + Shoreline Protection
- + Slope Stabilization
- + Retaining Walls
- + Erosion Control
- + Native Plantings
- + Stormwater Management

VEGETATED ENVIRONMENTAL SOLUTIONS

Permanent Vegetative Slope Stabilization



What Is Envirolok

WWW.ENVIROLOK.COM



Permanent Vegetative Solutions

- Native Seed
- Native Plug Plantings
- Native Vegetative Mat (NVM)
- Envirolok

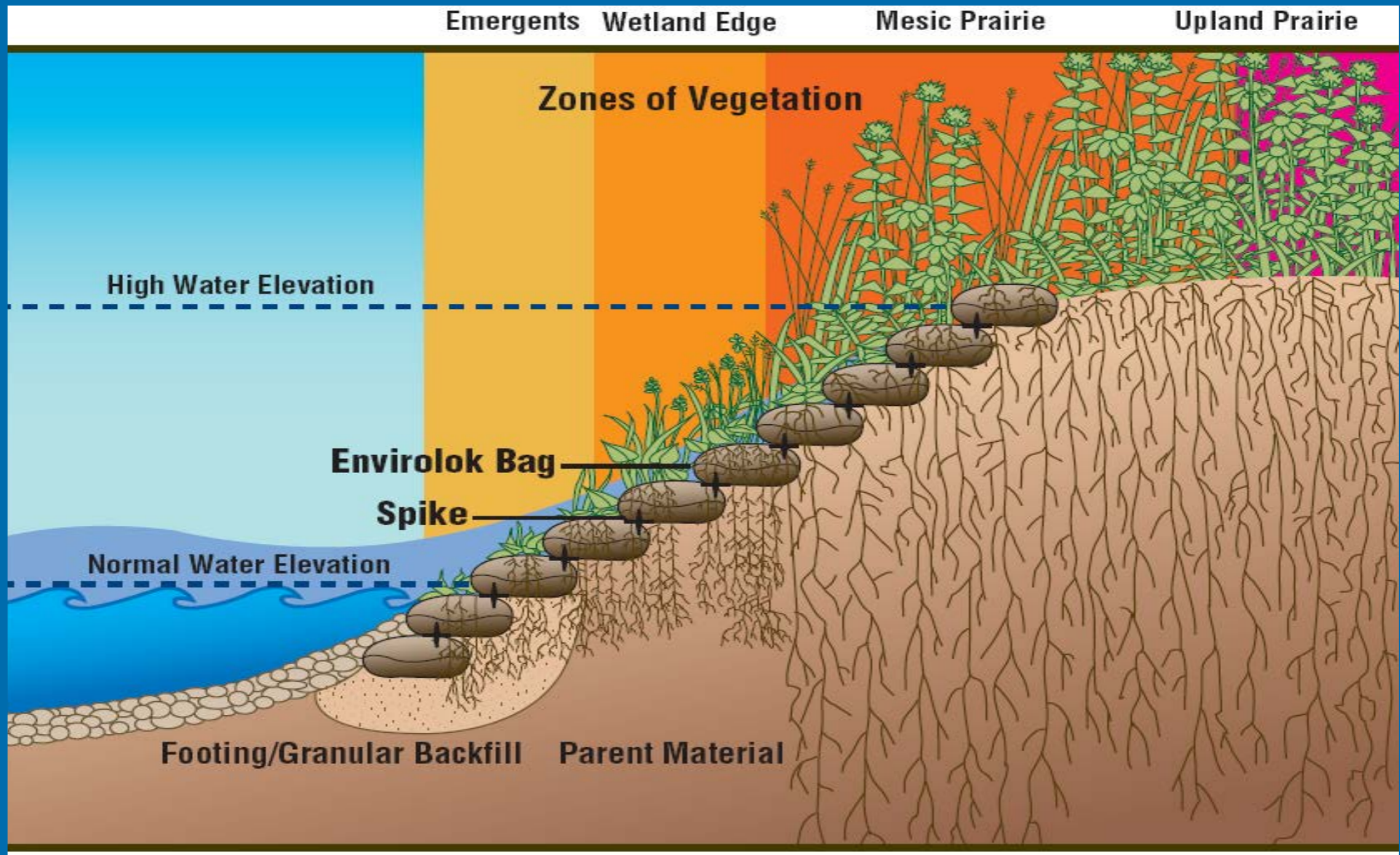


What Is Envirolok

WWW.ENVIROLOK.COM



- **Deep Root System-**
 - **Holds Soil**
 - **High Infiltration**
 - **Root Microbes Clean Water**
- **Low Maintenance**
- **Provides Habitat**
- **Aesthetic Beauty**
- **Native or Ornamental**



VEGETATION ZONES

- Over 400 Species Available
- Individual Species, Pre-Designed or Custom Mixes
- Source-Identified, (Midwest & Great Lakes Region)
- Hydroseed w/ tackifier or Drill/ Hand w/ Matting
- Install October — June*



Ideal for large acreages



Cost Effective Installation



Maximize Species Diversity



Broadcasting Can be challenging



Does not hold up to erosion/ Nature (wind, water, birds) in Establishment

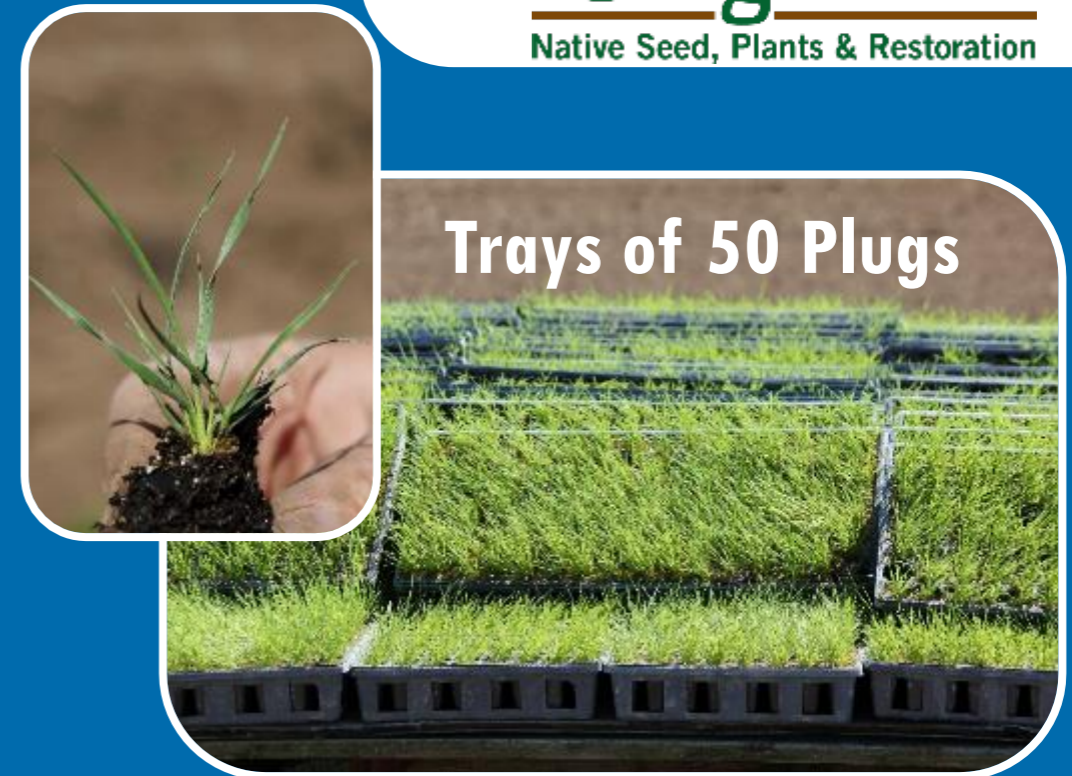


- 👎 Higher Cost, Initial Watering
- 👎 Watering
- 👍 Great for Bio-Infiltration & Slopes
- 👍 “Designer Prairies” – Urban Look



Trays of 32 Pots

- 2.5” x 3.5” Deep Pots
- Flats Can Be Mixed Species



Trays of 50 Plugs

- 2” x 5” Deep Plugs
- Available in Quantities of 50*
- Large Jobs/ Contract Growing



 **Envirolok**[®]

 **Agrecol**[®]
Native Seed, Plants & Restoration

- **Easy Installation, Low Maintenance**
- **Immediate Vegetation for Stabilization**
- **3'-4" x 11' Roll**
- **Available via Contract Grow**
- **Watering/ Care Needs**
- **More Naturalized Look**
- **Available Pre-designed or Custom**

VEGETATION- NATIVE VEGETATED MAT

WWW.ENVIROLOK.COM



 **Envirolok**[®]

 **Agrecol**[®]
Native Seed, Plants & Restoration



NVM — BADGER PRAIRIE

WWW.ENVIROLOK.COM

The logo for Envirolok features a stylized green icon of three stacked blocks with plus signs, followed by the word "Envirolok" in a bold, green, sans-serif font with a registered trademark symbol.

Envirolok®

The logo for Agrecol features a green circular icon with stylized plant leaves, followed by the word "Agrecol" in a green, serif font with a registered trademark symbol. Below it, the text "Native Seed, Plants & Restoration" is written in a smaller, green, sans-serif font.

Agrecol®
Native Seed, Plants & Restoration



NVM — BADGER PRAIRIE

WWW.ENVIROLOK.COM



Envirolok[®]



Agrecol[®]
Native Seed, Plants & Restoration

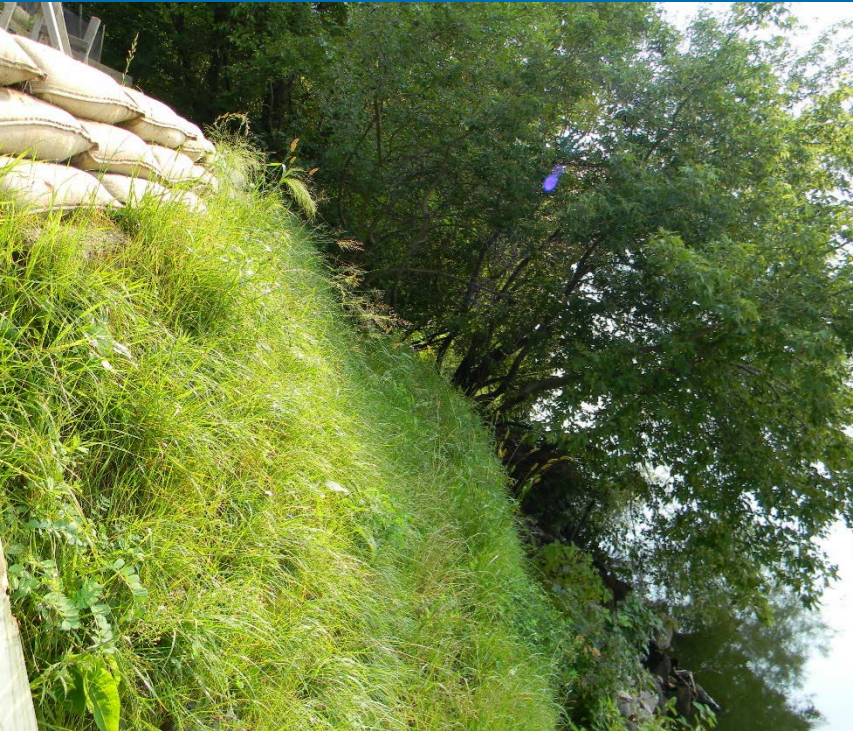
NVM – BADGER PRAIRIE

WWW.ENVIROLOK.COM

SLOPE STABILIZATION

MSE WALL

GREATER THAN 70° SLOPE



STEEP SLOPES
RETAINING WALLS
SHORELINES
STREAMBANKS

GROUND PLANE

VERTICAL PLANE

RSS

LESS THAN 70° SLOPE



EMBANKMENTS
RETAINING WALLS
SHORELINES
STREAMBANKS

EROSION CONTROL

MATTRESS

“FLAT”/ SINGLE LAYER



STORMWATER MANAGEMENT
STREAM CHANNELS
SWALES
EMBANKMENTS

GROUND PLANE

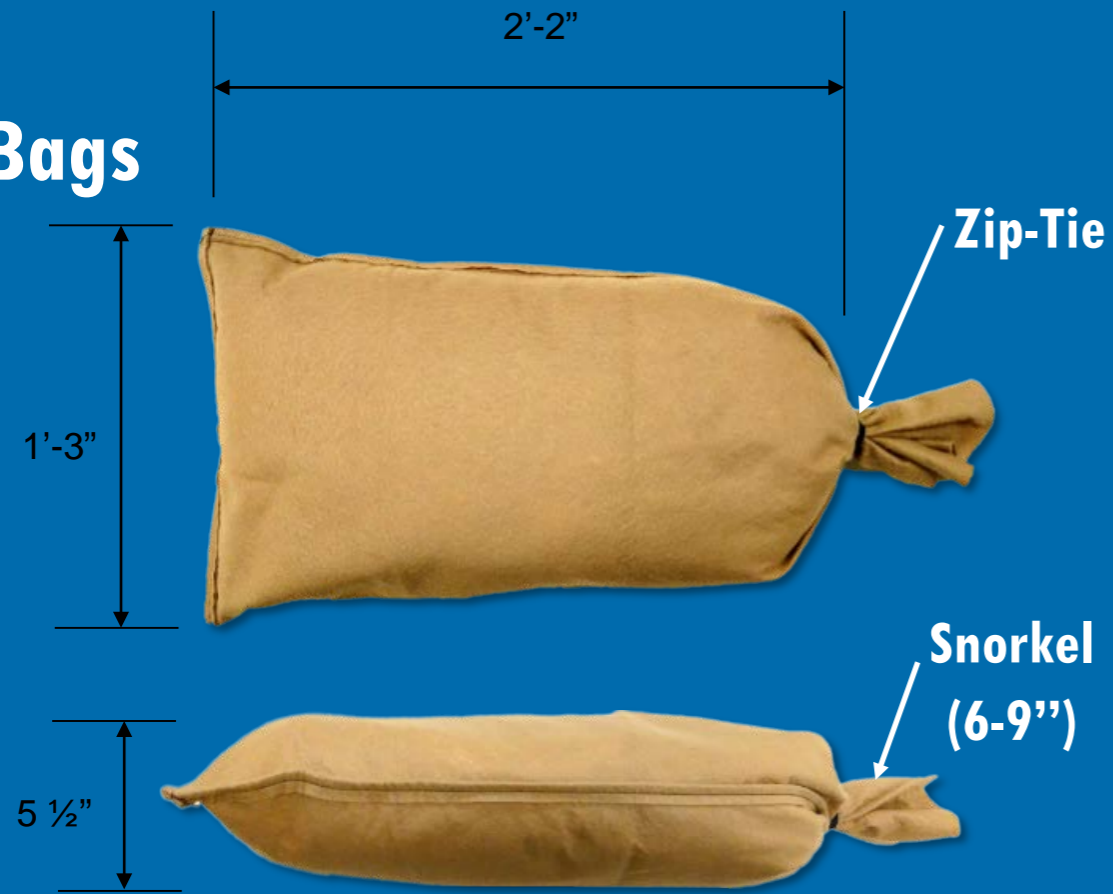
VERTICAL PLANE

ENVIROLOK APPLICATIONS

WWW.ENVIROLOK.COM

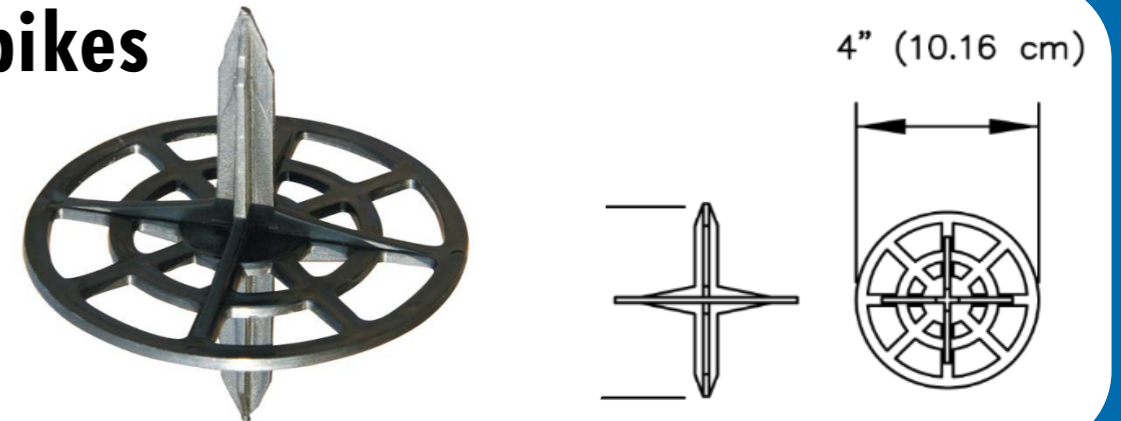
 **Envirolok**[®]

Bags



- Face Area: 1 SF
- Mattress Face Area 2.7 SF
- 1.25 cf/ bag
- 80-90 lbs./ bag

Spikes



- High Impact Polystyrene
- 2 Pins Required per bag
- Shear Resistance of 223 lbs./ ft.
- “Washer” to Eliminate Leaning
- Connects 3 Bags for Stability
- Use as Connection to Base Course
- Design Does Not Limit Root Growth



- **Flexibility of Applications**
- **Compatibility** with advanced reinforcement
- **Ease of installation** — LID
- **Tan Bag Technology** — Strength, UV Resistance, Cool & Blending
- **Bag-Fill** — Not Proprietary, No Compost means no slumping
- **Sustainability** — Green Infrastructure, LEED & SSI Applications
- **Vegetation Options** — Options fit a variety of budgets and
- **Spikes** — Simple Installation, Does not limit root growth
- **Support** — Design, Engineering & Maintenance

WHY ENVIROLOK

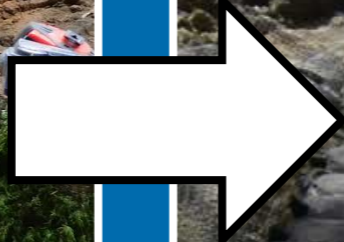
WWW.ENVIROLOK.COM



Fill

Prep

Base



CONSTRUCTION- STANDARD

Set Bags



Set Spikes



Repeat



SLOPE STABILIZATION



Backfill



Coping



Vegetation

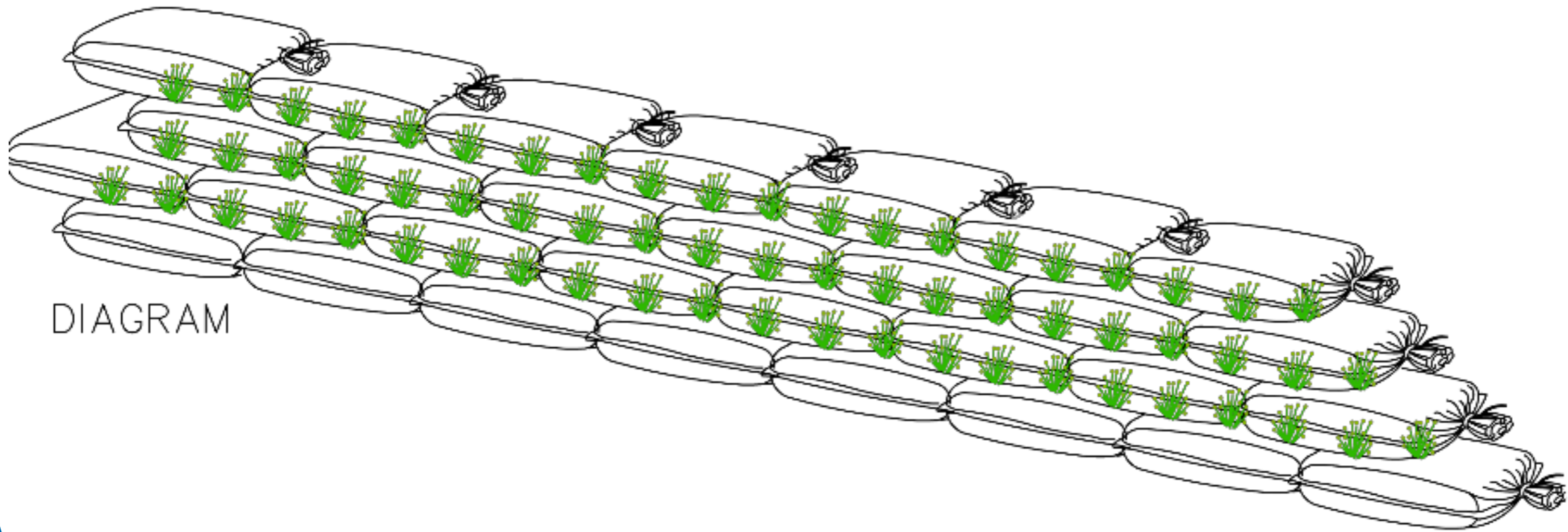


CONSTRUCTION- STANDARD

The logo for Envirolok features a stylized green plant icon with three leaves and a plus sign, followed by the brand name "Envirolok" in a bold, green, sans-serif font with a registered trademark symbol.The logo for Agrecol features a green circular icon with a stylized plant and the brand name "Agrecol" in a green, serif font with a registered trademark symbol. Below the name is the tagline "Native Seed, Plants & Restoration" in a smaller, green, sans-serif font.

- **Cost Effective Installation**
- **Maximize Species Diversity**
- **Choose Appropriate Species for Planting Zone(s)**
- **Hydroseed or Hand Slurry**
- **Increase Coverage**
- **Ensure Proper Tackifier**
- **Install October – June***

VEGETATION - SEEDING



DIAGRAM



2-3 Plants/ Bag*

Install Between Bags and Courses

Do Not Puncture the Bags

VEGETATION – NATIVE PLUGS

Fill



- Saturate the Bags
- Stake the Mat
- Watering Tips

Set



Water



NVM- Application

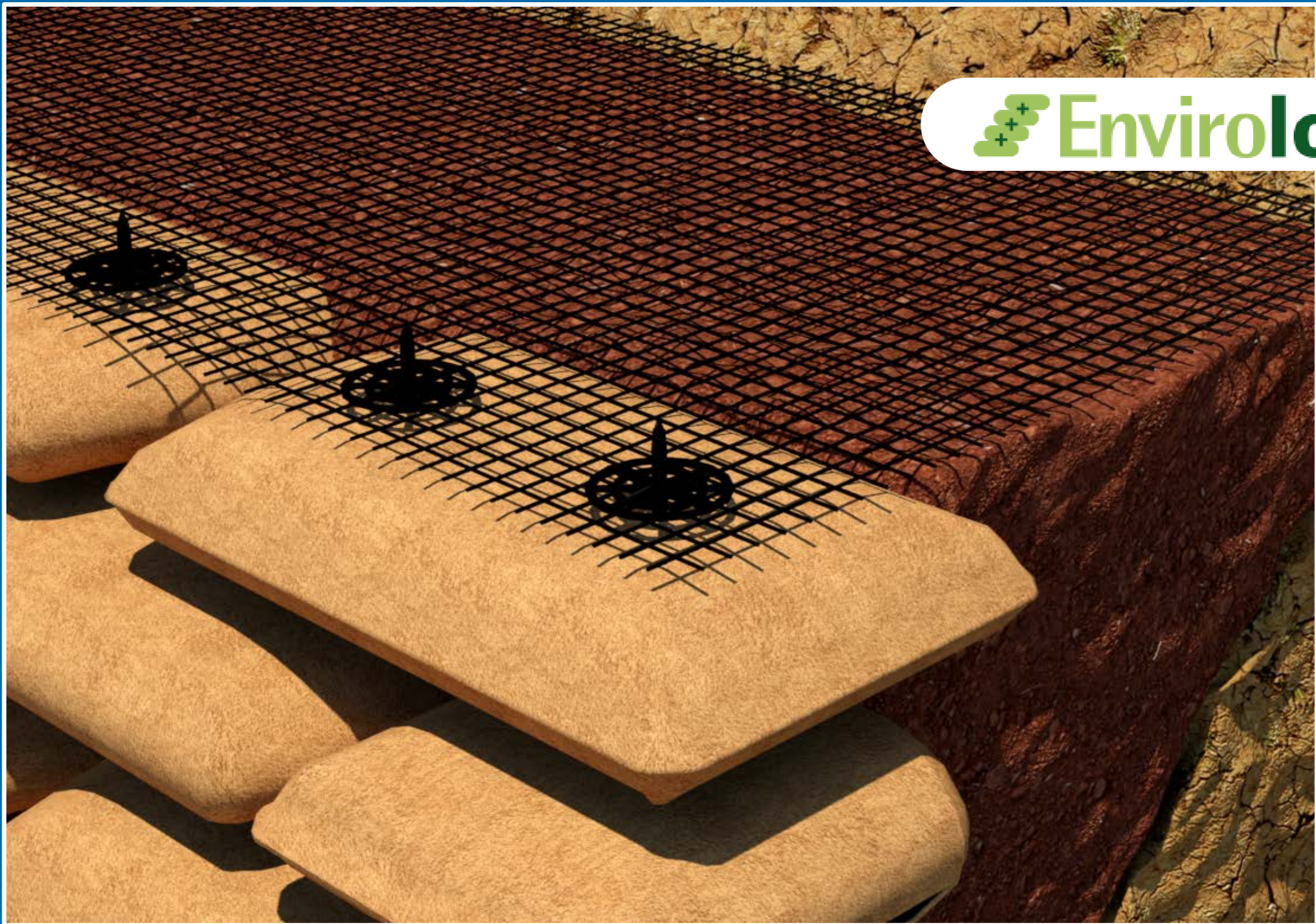
WWW.ENVIROLOK.COM



©2007 Agrecol Corporation

Starkweather Creek- Madison, WI

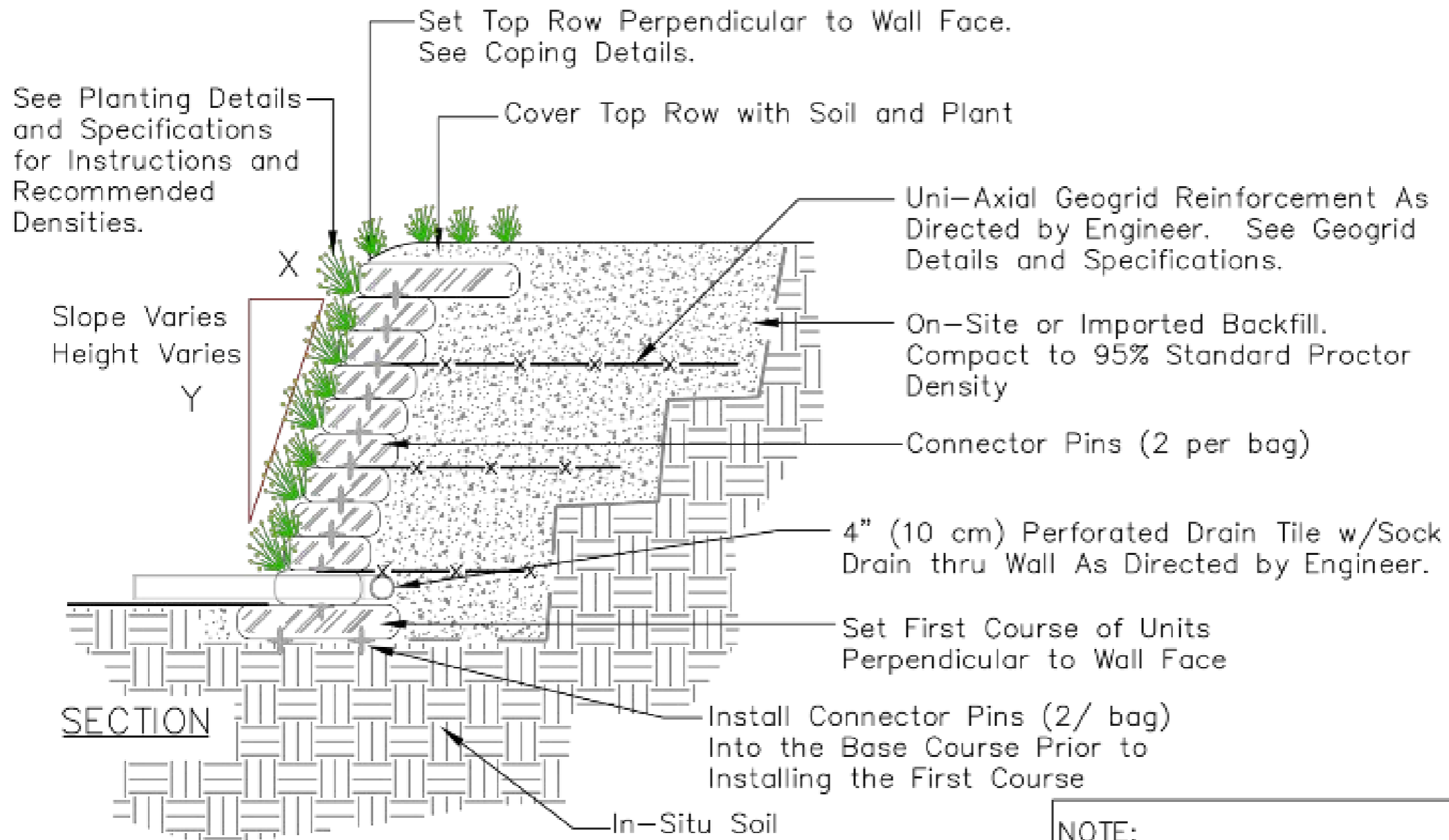
MSE - STREAMBANK RESTORATION



Lakewood Country Club- Colorado

MSE - STREAMBANK RESTORATION

WWW.ENVIROLOK.COM



NOTE:
 • See Specifications for full Installation Instructions

Lakewood Country Club- Colorado

REINFORCEMENT- GEOGRID



Starkweather Creek- Madison, WI

MSE - STREAMBANK RESTORATION



©2007 Agrecol Corporation

Starkweather Creek- Madison, WI

MSE - STREAMBANK RESTORATION



Hot tub

Extreme erosion from flooding and continuing high water

Sandy River, Oregon



Bags were wrapped in Geogrid for maximum strength

Sandy River, Oregon

ARMORING - WATERFRONT RESTORATION

WWW.ENVIROLOK.COM



Four years after several high water events

Sandy River, Oregon

ARMORING - WATERFRONT RESTORATION

WWW.ENVIROLOK.COM



Lake Geneva, Wisconsin

MSE - WATERFRONT RESTORATION

The logo for Envirolok, featuring a green stylized leaf icon with three plus signs to its left, followed by the word "Envirolok" in a bold, green, sans-serif font with a registered trademark symbol.

Envirolok®



Lake Geneva, Wisconsin

MSE - WATERFRONT RESTORATION



 **Envirolok**[®]

Lake Geneva, Wisconsin

MSE - WATERFRONT RESTORATION



 **Envirolok**[®]

Lake Geneva, Wisconsin

MSE - WATERFRONT RESTORATION



Lake Geneva, Wisconsin

MSE - WATERFRONT RESTORATION

EXISTING SITE



**+ -50' From
OHW**

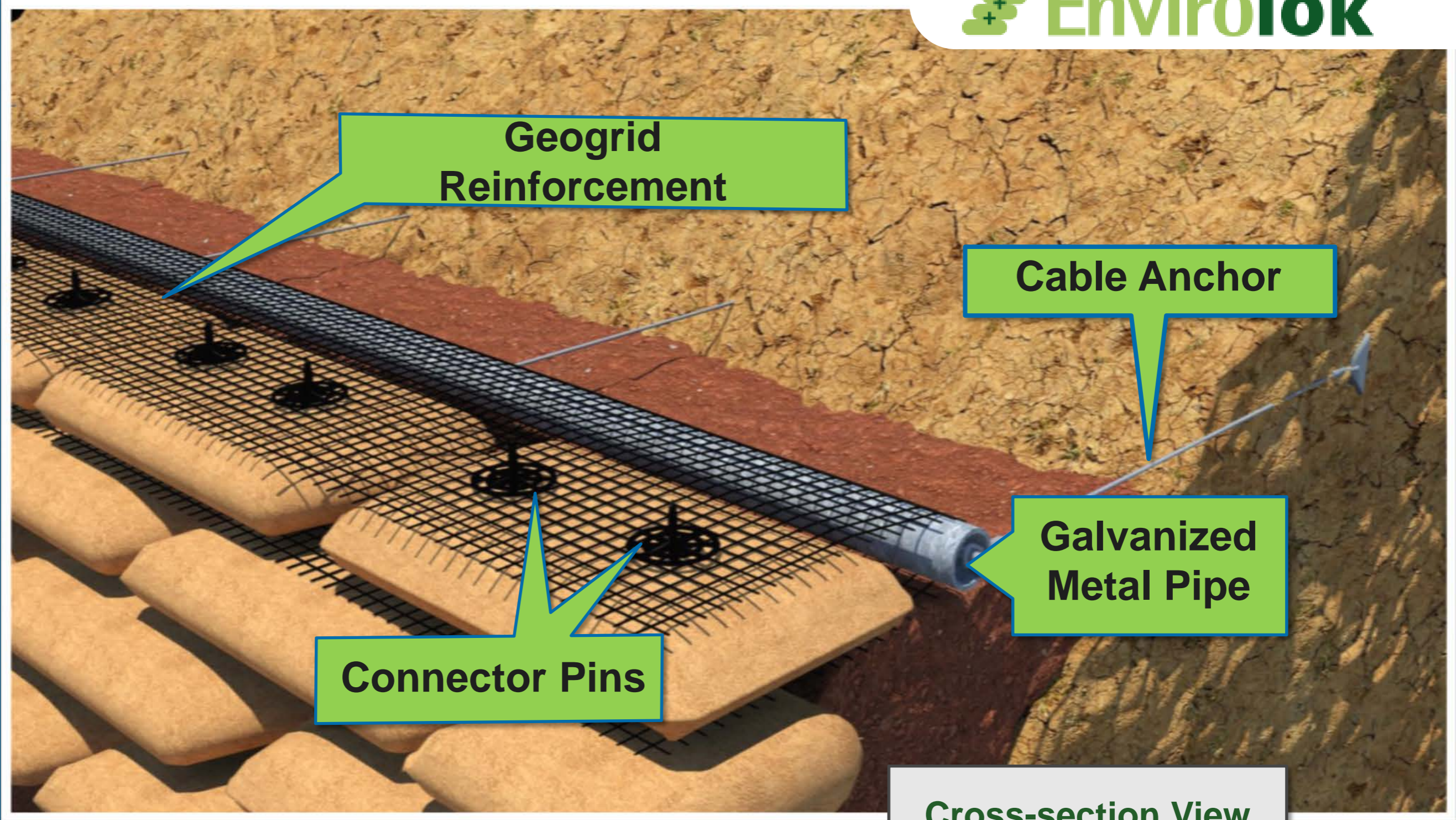
Failing Timber Walls



Lake Wisconsin, Wisconsin

MSE - WATERFRONT RESTORATION

DETAIL



**Geogrid
Reinforcement**

Cable Anchor

**Galvanized
Metal Pipe**

Connector Pins

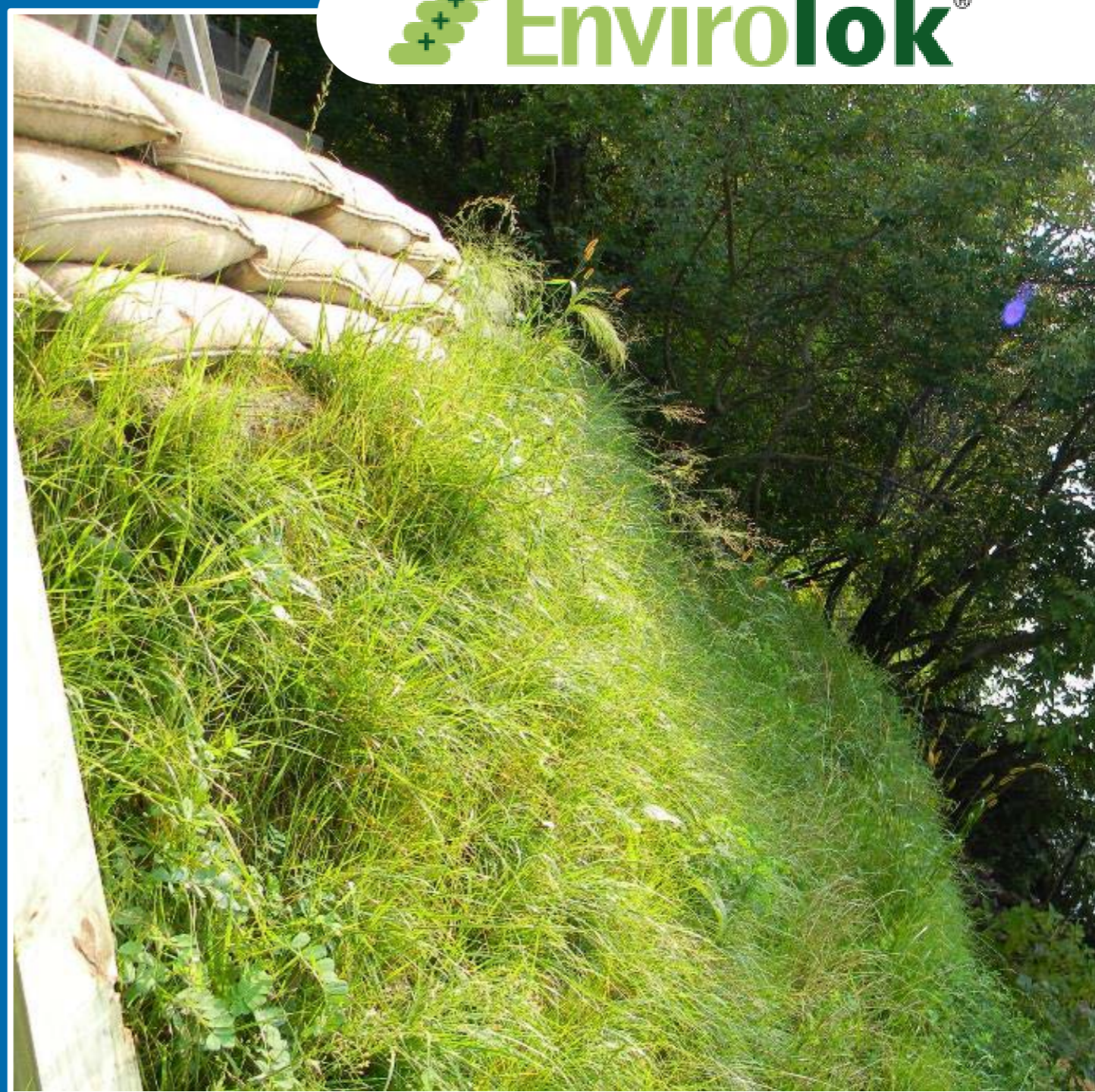
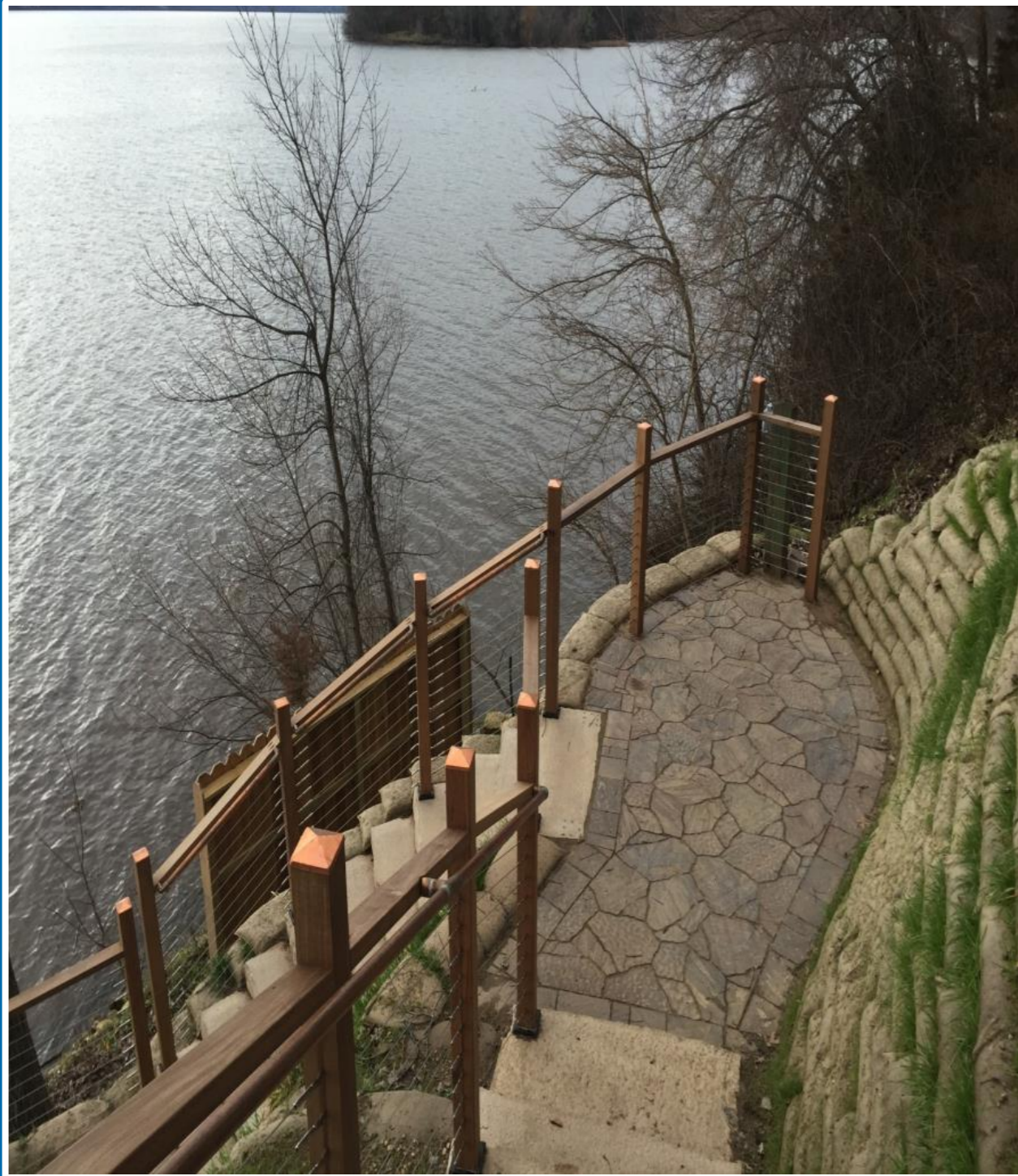
Cross-section View

REINFORCEMENT- ANCHORING

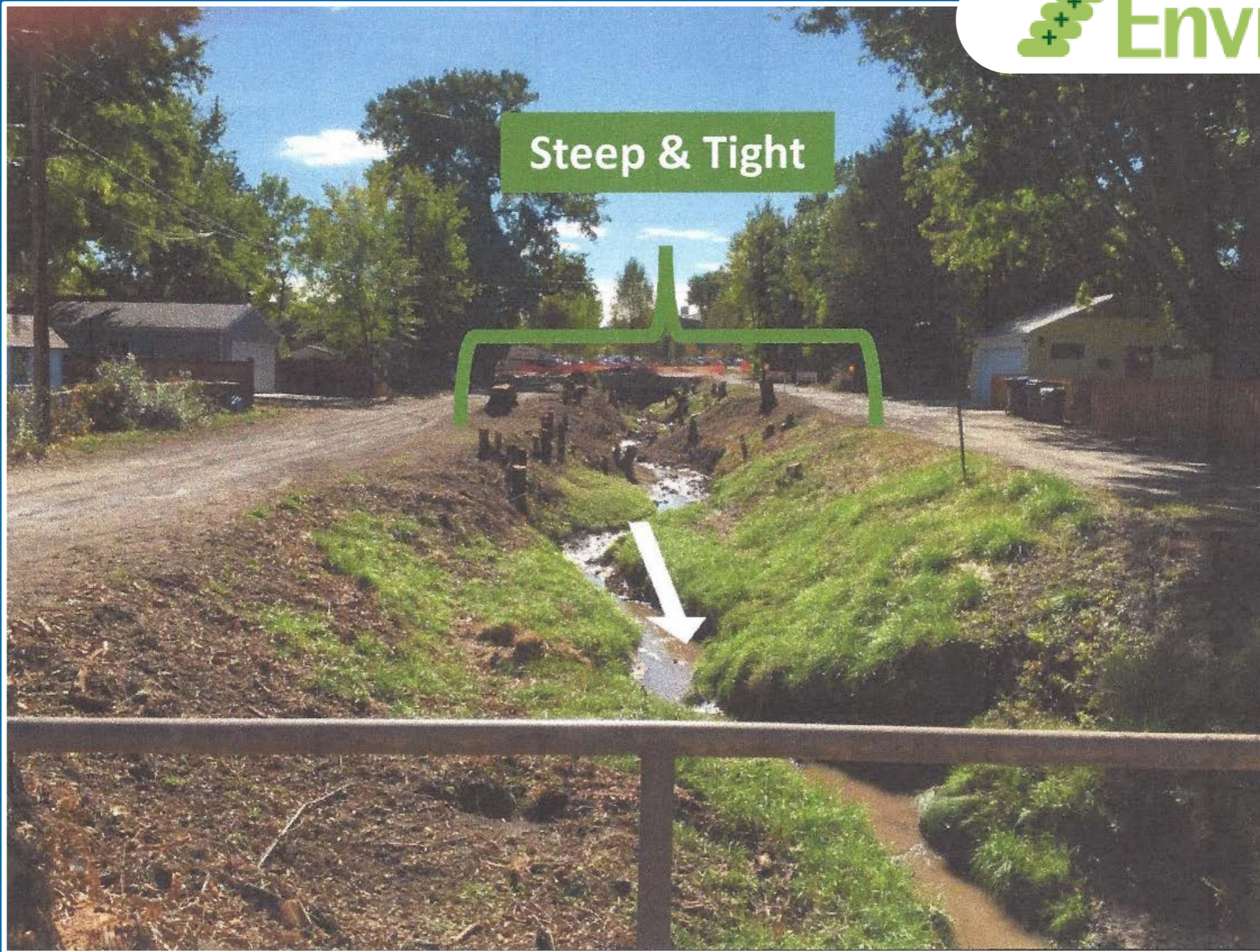


Lake Wisconsin, Wisconsin

WATERFRONT RESTORATION



Lake Wisconsin, Wisconsin



Golden Colorado

STREAM CHANNEL - STORMWATER



Lining meandering low flow stream

Sealing soils to prevent sediment flow

Golden Colorado

STREAM CHANNEL - STORMWATER



Spring 2016

**Hydroseed w/ Native Grass
and Wildflower Mix**

Golden Colorado

STREAM CHANNEL - STORMWATER



Summer 2016

Golden Colorado

STREAM CHANNEL - STORMWATER



Chicago River- Chicago, IL

STEAMBANK RESTORATION

www.envirolok.com



Eric Seidl, LEED-AP

608.226.2565

ecosolutions@envirolok.com