



The Art of Submitting a Successful WRAPP

A City of Madison Perspective

Jojo O'Brien
City of Madison Engineering Division

OUTLINE

- Our Typical NOIs
- Our Typical Chapter 30 Permits
- Our System for Managing the Permit Process
 - Understand
 - Communicate
 - Compromise
 - Submit
 - Wait

TYPICAL CITY OF MADISON CHAPTER 30 PERMITS

- Approximately 25-30 WRAPPs per Year
- Construction Site Storm Water Runoff General Permits
- Lake Shorelines
- Streambanks
- Dredging
- Wetland Fill & Disturbance
- Outfalls
- **Combination of Several Categories**

Typical Construction Site Storm Water Runoff General Permit (NOI)

Construction with Greater than 1 Acre Disturbance

- Standard Reconstruction Projects
- Err on the Site of Caution
- Routinely part of shoreline and channel projects as well



Basset St Bike Path + Reconstruction



Williamson St Reconstruction



Langdon St Reconstruction

Typical Chapter 30 Permits

Shorelines

- Stabilization
- Miscellaneous Structures on a Lakebed
- Rarely have associated Wetland Disturbance Permit Requirements



Tenney Lagoon Shoreline Stabilization



Tenney Lagoon Shoreline Stabilization



Yahara Place Park Shoreline

Typical Chapter 30 Permits

Streambanks

- Stabilization
- “Restoration” (We’re working on this designation)
- Routinely has associated Wetland Disturbance Permit Requirements



Owen Conservation Park Channel Stabilization



Owen Conservation Park Channel Stabilization



Owen Conservation Park Channel Stabilization

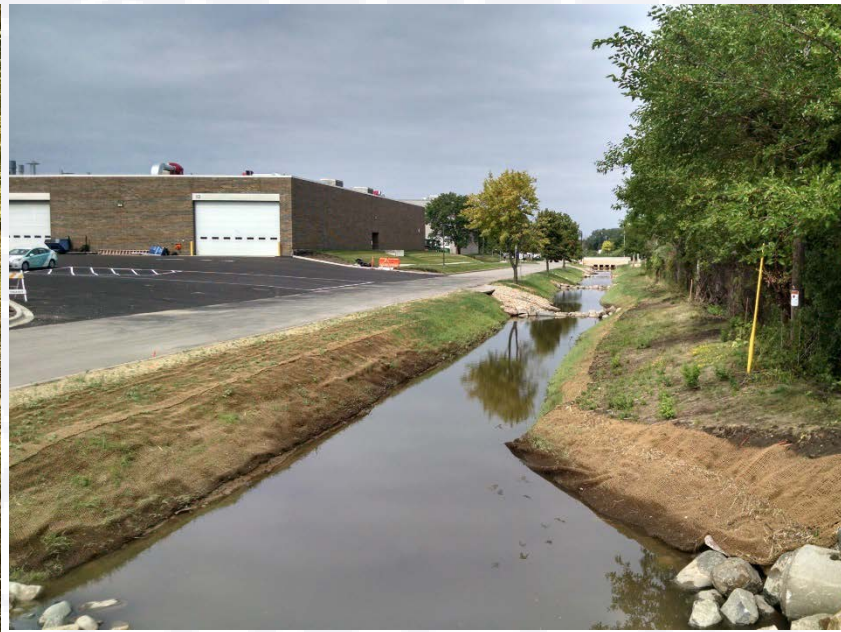
Typical Chapter 30 Permits

Dredging

- Channel
- Lakebed
- Stormwater Management Facilities



MATC Channel Dredging



MATC Channel Dredging



Monona Bay Weedcutter Dredging

Typical Chapter 30 Permits

Combination Permits – Wingra Creek Parkway – Phase 3

- Dredging
- Wetland Disturbance and Fill
- Construction Site Storm Water Runoff NOI
- Stream Realignment/Channel Stabilization
- Miscellaneous Structures
- Outfall



CITY OF MADISON PERMITTING PROCESS

- **Understand**
 - If possible, know basic permit requirements
 - Understand your project
- **Communicate**
 - Communicate your plan with regulators prior to applying for a permit
 - Get to know your regulators: DNR **and** USACE
- **Compromise**
 - Alter plans as necessary to meet known permitting requirements:
 - *Endangered Species – Time Restrictions*
 - *Wetland Fill – Minimize*
 - *Dredging – Disposal Restrictions*
- **Submit**
 - Submit a THOROUGH explanation with ample documentation
- **Wait**
 - If possible, wait to bid projects until permits are obtained – Especially Chapter 30 Permits

CITY OF MADISON PERMITTING PROCESS

- **Lessons Learned the Hard Way**
 - 2003 MOU between DNR and City of Madison
 - Multiple projects delayed by permit issues
 - Became weary of harassing/begging our regulators to expedite our permits
- **Hold Monthly Meetings with our Regulators**
 - Big thanks to Wendy Peich (WIDNR) and Kerrie Hauser (USACE)
 - Open communication has altered how we permit and bid our Chapter 30 projects

Do's and Don'ts for Submitting a Successful WRAPP

Mike Wegner, PE





Presenters

Mike Wegner – Brown and Caldwell

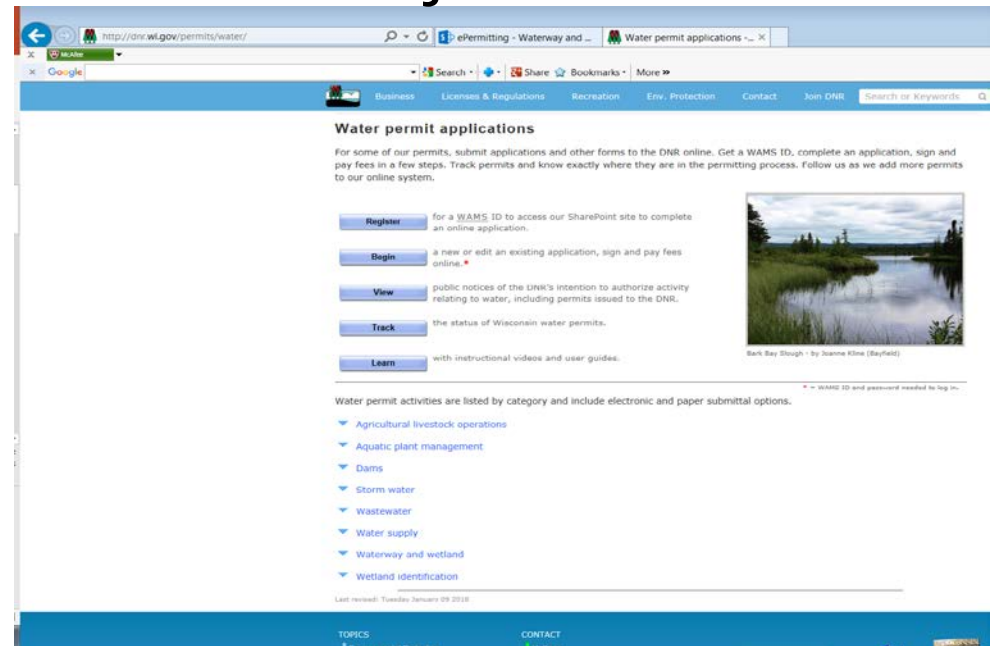
Scott Koehnke – WDNR

Gary Raasch – RA Smith National

Jojo O'Brien - City of Madison

What is a WRAPP?

- Water Resources Application for Project Permits
- NOI
- Waterway/Wetland Permits
- Available on-line



<http://dnr.wi.gov/permits/water/>

<http://dnr.wi.gov/topic/waterways/>

<http://docs.legis.wisconsin.gov/statutes/statutes/30.pdf>

<http://docs.legis.wisconsin.gov/code>

Keys to a Successful Submittal

- ❖ Schedule
- ❖ Communication
 - Verbally
 - Often
 - Client-Consultant-Reviewer
- ❖ Relationships
 - WNDR
 - USACE
- ❖ Know your reviewer and boundaries
 - Know and understand the regulations
 - Where could there be flexibility



Keys to a Successful Submittal (cont.)

❖ Unique issues about your site/project

- Location
- Social Issues
- Environmental Issues
- Site Conditions



❖ Develop project alternatives (if needed) early

- Feature locations
- Size
- Avoid, Minimize, Mitigate

What Shouldn't you do?

- ❖ Complete an application without understanding the regulations
- ❖ Jump to conclusions without considering alternatives
- ❖ Submit without reading the entire application instructions
 - Are there new regulations? Guidance?
 - Has the general permit changed?
- ❖ Submit an application without talking to the reviewer
- ❖ Submit an incomplete application

Next Up

Scott Koehnke – WDNR

Gary Raasch – RA Smith National

Jojo O'Brien – City of Madison