



Plant Identification

Ashley Vande Voort

Good Vs. Bad

- ▶ Native
 - Historically grew in this region



Good Vs. Bad

▶ Invasive

- Has tendencies to outcompete other vegetation

Canada Goldenrod
Native



Boxelder
Native



<http://campus.albion.edu/albiontrees/box-elder/>

Giant Ragweed
Native



<http://www.minnesotawildflowers.info/udata/r9ndp23q/pd/ambrosia-trifida-7.jpg>

Good Vs. Bad

- ▶ Non-native
 - Not from this region
 - NOT necessarily invasive

Common plantain



<https://www.pinterest.com/pin/376050637618490729>

Good Vs. Bad

- ▶ Non-native invasive
 - Not from this region and outcompetes other vegetation

Crown Vetch



Canada Thistle



Glossy Buckthorn



NR 40

“The invasive species rule (Wis. Adm. Code ch. NR 40) makes it illegal to possess, transport, transfer, or introduce certain invasive species in Wisconsin without a permit.” – WDNR

<http://dnr.wi.gov/topic/invasives/classification.html>



Prohibited Vs. Restricted

▶ Prohibited

- Very few populations established in that region of WI
- DNR requires control on these species

▶ Restricted

- Plants better establish in that region of WI
- Control is encouraged, but not required



Noxious Weeds Ordinance

- ▶ Wisconsin state law mandating the control of certain species which are:
 - Canada Thistle
 - Field Bindweed
 - Leafy Spurge
- ▶ Additional species may be included by local officials or WDNR

Canada Thistle– F2

- ▶ Noxious Weed
- ▶ Restricted
- ▶ Spreads by seed (similar to dandelion)
- ▶ Grows in dry to moist areas



Canada Thistle



Field Bindweed

- Noxious Weed
- Spreads by seed, roots, and vegetatively
- Grows in dry areas



<https://gobotany.newenglandwild.org/species/convolvulus/arvensis/>

Leafy Spurge – F18

- ▶ Noxious Weed
- ▶ Restricted
- ▶ Spreads by seed and root
- ▶ Dry areas



Purple Loosestrife – F16

- ▶ Restricted
- ▶ Spreads by seed
- ▶ Grows in wet areas



Purple Loosestrife



Phragmites (Common Reed) – G3

- ▶ Prohibited in western WI
- ▶ Restricted in eastern WI
- ▶ Spreads mostly by rhizome and stem fragments, less commonly by seed
- ▶ Grows in wet areas



Phragmites



Phragmites



Cattail

Broad-leaved Cattail
Native



<http://www.ecy.wa.gov/programs/wq/plants/native/cattail.html>



Hybrid Cattail– maybe

Narrow-leaved Cattail
Non-native



<http://www.jeffpippen.com/plants/typha.htm>

Cattail



Broad-leaved Cattail
Native



Narrow-leaved/Hybrid Cattail
Non-native

Narrow-leaved/Hybrid Cattail – G1

- ▶ Restricted
- ▶ Spreads by roots and seeds
- ▶ Grows in wet areas



Cattail



Reed Canary Grass – G4

- ▶ No restrictions
- ▶ Spreads by seed and roots
- ▶ Grows in wet to dry areas



Reed Canary Grass



Kentucky Blue Grass



Teasel – F21

- ▶ Restricted
- ▶ Spreads by seed
- ▶ Grows in damp to dry areas



Teasel



Bull Thistle – F22

- No restrictions
- Spreads by seed (similar to a dandelion)
- Grows in dry areas



Not all thistles are bad!

- ▶ There are several native thistles
- ▶ Typically they are less spiny and light colored under the leaves



<https://www.minnesotawildflowers.info/flower/field-thistle>



Wild Parsnip – F24

- No restrictions
- Spreads by seed
- Grows in dry areas



Queen Ann's Lace

- ▶ No restrictions
- ▶ Spreads by seed
- ▶ Grows in dry areas



Sweet Clover – F19

- ▶ No restrictions
- ▶ Spreads by seed
- ▶ Grows in dry areas



Crown Vetch – F5

- ▶ No restrictions
- ▶ Spreads by seed and rhizomes
- ▶ Grows in dry areas



Birdsfoot Trefoil – F1

- ▶ No restrictions
- ▶ Spreads by seed, rhizomes, and vegetatively
- ▶ Grows in dry areas



Burdock

- ▶ No restrictions
- ▶ Spreads by seed
- ▶ Grows in dry areas



Natives



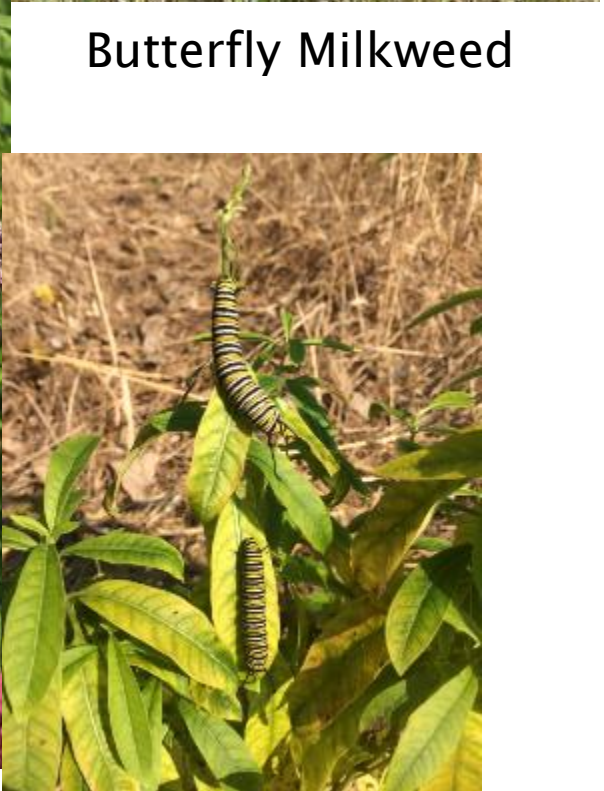
Milkweeds



Common Milkweed



Swamp
Milkweed



Butterfly Milkweed

Wild Bergamot, Bee balm



Black-eyed Susan



New England Aster



Ox Eye Sunflower



https://www.wildflower.org/plants/result.php?id_plant=HEHE5

Purple Coneflower



Yellow Coneflower



<https://www.minnesotawildflowers.info/flower/gray-headed-coneflower>

Blazing Star, Gayfeather



<https://pmcafee2013.wordpress.com/2014/03/25/plant-a-day-prairie-blazing-star/>

Spiderwort



Indian Grass



<https://www.ernstseed.com/products/biomass/featured-biomass-species/indiangrass/>



Big Bluestem



Blue Vervain



Pickerel Weed



Arrowhead, Duck Potato



Burreed



https://upload.wikimedia.org/wikipedia/commons/thumb/1/11/Sparganium_erectum1.jpg/220px-Sparganium_erectum1.jpg



Softstem Bulrush



avandevoort@releeinc.com

